



UNIVERSITY OF CAPE TOWN
IYUNIVESITHI YASEKAPA • UNIVERSITEIT VAN KAAPSTAD

Introduction to POWERPOINT 2007



Source: Wikibooks, the open content textbooks collection, Powered by the Wikimedia Project. Retrieved January 27, 2010 from:
http://en.wikibooks.org/wiki/Microsoft_Office_PowerPoint

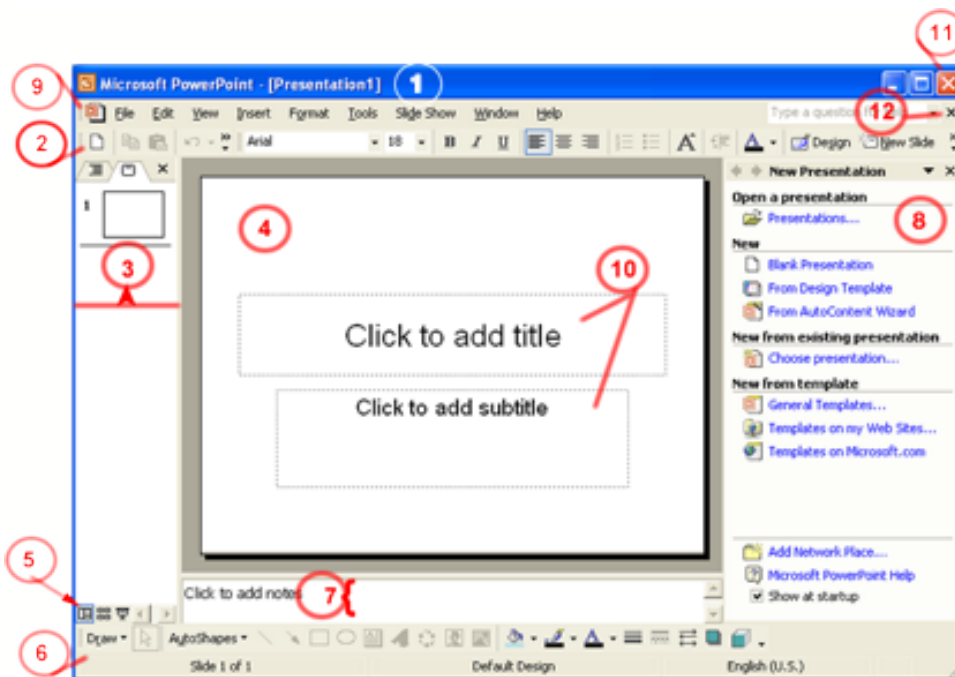


Microsoft Office PowerPoint

"PowerPoint" refers to Microsoft PowerPoint, a program that allows the user to design a presentation that consists of multiple slides. These slides may contain images, text, video clips, and related types of information. PowerPoint is useful for delivering a speech, because the user can utilize text on the screen to remind him or herself of the information to be conveyed to the audience or to summarize his/her dialogue into more manageable and "friendly" sizes, as well as to entertain or explain graphs, charts, and related data.

The Basics: Creating and Editing a Presentation

The PowerPoint Window



1. **Title Bar** - Displays the name of the application followed by the title of the presentation
2. **Formatting Toolbar** - Provides quick access to commands you need for formatting
3. **Outline and Slides Tab** - The slides tab gives you a thumbnail view of all the slides in the presentation and allows to rearrange their order; the outline tab adds textual content to the slides in an outline format
4. **Slide Pane** - Area where you build the slides for your presentation
5. **View Buttons** - Change the way you view the presentation; the Normal view (left button) is the default, the Slide Sorter view (center button) shows you only the thumbnails and is used to sort and rearrange the presentation, and the Run view (right button) runs the presentation from the current slide
6. **Drawing Toolbar** - Provides all the tools you need to draw and format objects
7. **Notes Pane** - Adds notes for yourself for each slide in your presentation
8. **Task Pane (Windows version)** - Varies based on what you are currently working on; when you first start PowerPoint, you see the New Presentation task pane; other possible tasks include Slide Layout, Slide Design, and Effects
9. **Menu Bar** - Includes all of the PowerPoint menu choices
10. **Placeholders** - Designate the space that will be filled with titles, text, or other objects such as graphics or charts
11. **Application Close Button (Windows Version)** - Exits PowerPoint
12. **Presentation Close Button (Windows version)** - Closes the current presentation

Create a New Presentation

Using the AutoContent Wizard

1. If necessary, chose **File > New** to display the **New Presentation** pane
2. On the **New Presentation** pane, click on the **AutoContent Wizard** link

You will be walked through a series of questions about the presentation you are making, including a category for the type of information being presented and the method of delivery. The Wizard then applies a background and text as well as an outline of text you may use as a guide. This is the preferred method for creating a presentation in the least of amount of time.

Using a Design Template

1. If necessary, choose **File > New** to display the **New Presentation** pane
2. On the **New Presentation** pane, click on the **From Design Template** link
3. The **Slide Design** pane will display on the right side of the screen with a variety of different templates to choose from
4. Select the design of your choice from the **Slide Design** pane
5. Click **OK** to begin working with the first slide in the Normal View

Using a Blank Presentation

1. If necessary, chose **File > New** to display the **New Presentation** pane
2. On the **New Presentation** pane, click on the **Blank Presentation** link

This will open a new presentation with no template. You will provide the content, background, color scheme, text format, etc. This method gives you the most freedom, but also requires the most amount of time to complete.

Adding a new slide

Once you have opened a new presentation, the next step is to add and format the content. PowerPoint provides a selection of pre-defined slide layouts based on different types of content that you can use to quickly add content to the slides. For each of the 27 Slide Layouts provided, PowerPoint combines the four types of placeholders in different combinations; each placeholder will be replaced with the following type of content:

Placeholder:	Replaced with:
Title	A title
Subtitle	A subtitle
Text	A bulleted list
Content	<i>+Slide Layout Placeholders</i>

Using a Slide Layout ensures that the text and other elements you enter into the placeholders will have consistent spacing and be optimally arranged.

How to Add Slides to a Presentation

1. Click the New Slide button on the Formatting toolbar.
2. From the list of Slide Layouts, select the layout you want to apply to the new slide.
3. You may now begin adding content using the placeholders in the layout.

How to Change the Layout for any Slide

PowerPoint will try to guess what layout you want to use for new slides that are added to the presentation. If you want a different layout for the slide you can quickly change the layout for any slide.

1. Display the slide that you want to change in the Slide Pane (work area in the center of the window).
2. Choose **Format > Slide Layout** to display the Slide Layout task pane.
3. Click on the layout you want to apply to the slide.
4. PowerPoint will attempt to fit existing content into the new layout, but you will probably have to make additional changes.

How to Add Slides in the Outline Tab

You can also create new slides while working in the Outline tab. By default the Outlining toolbar should display, but if it does not, select **View > Toolbars > Outlining**.

1. Display the Outline tab by clicking on Outline in the pane on the left.
2. Place the cursor at the end of the text in the slide you wish the new slide to follow.
3. Click the **New Slide** button to insert a new slide.

Entering Text on a Slide

Enter Text on a Slide Using Placeholders

1. Click on the **Title**, **Subtitle**, or **Text** placeholder.
2. Type the text you want.
3. If necessary, press **[Return]** or **[Enter]** to move to a new line.
4. Click anywhere on the slide outside of the placeholder to deselect it.

Enter Text Using the Outline Tab

Working in the **Outline Tab** allows you to type and edit text for the presentation in a more word processing-like environment than the Slide pane. The Outline tab displays in the pane on the left side of the screen when you are working in the Normal view.

Information in the Outline tab is arranged by levels. The Title of each slide appears as the first, left-most level next to a numbered icon of the slide. Bulleted text is indented one to four levels to the right of the title. The Outline tab has an Outlining toolbar that displays to the left of the pane.

*Tip: If the Outline and Slides panes are not displaying in the Normal view, select **View > Normal (restore panes)** and it will display on the left side of the screen.*

1. After adding a new slide, Type the slide title and press **[Return]** or **[Enter]**.
2. To change the slide text to a first level bullet, press **[Tab]** or click the **Demote** button on the Outlining toolbar.
3. Type the text for the first bullet and press **[Return]** or **[Enter]** to move to the second bullet.
4. To create a sub-bullet, press **[Tab]** and type the text.
5. Continue to enter text for bullets and sub-bullets until the slide is complete.
 - Use **[Return]** or **[Enter]** to create a new instance of the same level you are on. For example, if you are typing a level one bullet, pressing **[Return]** or **[Enter]** will create another level one bullet.

- To demote a line of text, use **[Tab]** or the **Demote** button. This will make a level one bullet into a level two sub-bullet.
- To promote a line of text, press **[Shift] and [Tab]** together or click on the **Promote** button. This will turn a level one bullet into the Title of a new slide.

Adding Clip Art to a Slide

Effective visuals emphasize the key content points in a presentation. PowerPoint provides a selection of professionally designed pictures, or clip art, that you can use in your presentations. These clip art images include many different themes such as animals, people, buildings, food, holidays, business, and more.

How to Insert a Clip Art Image

1. Move to the slide on which you want to place clip art.
2. Apply a Slide Layout that includes a content or clip art placeholder.
3. Open the Select a Picture dialog box by:
 - Clicking on the Clip Art button on the content placeholder OR
 - Double-clicking on the clip art placeholder
1. In the **Search** box, type a word or phrase that describes the clip you want.
2. Click **Search**. PowerPoint displays the search results in the Select Picture List.
3. Click on the clip art image you want and click **OK**.

How to Resize a Clip Art Image

Once you have added a clip art object to your slide, you can resize it to make it fit better into your presentation.

1. Click on the Clip Art object to select it.
2. Put the arrow on one of the resize handles at the corner of the picture until the cursor changes to a double-headed arrow.
3. Depress the mouse button and drag the handle toward or away from the center to make the image larger or smaller. The corner handles resize the image proportionally and the handles on the sides of the image increase or decrease the height or width of the image. When you release the mouse button, the object appears in its new size.

Editing Slide Text

You know how to enter text into your presentation, but what happens if you decide you want to change the text? PowerPoint allows you to navigate to a specific slide and change the text.

Navigate in a Presentation

To Move to:	Do this:
The last slide in the presentation	Drag the scroll box to the bottom of the scroll bar or press [Ctrl] and [End]
The first slide in the presentation	Drag the scroll box to the top of the scroll bar or press [Ctrl] and [Home]
The next slide in the presentation	Click in the scroll bar below the scroll box or press [Page Down]
The previous slide in the presentation	Click in the scroll bar above the scroll box or press [Page Up]
To a specific slide	Drag the scroll box up or down until the scroll indicator displays the slide you want

Selecting Text

Knowing how to select text is a critical skill in all Microsoft Office applications. Selecting text is a necessary step for many procedures such as deleting blocks of text or formatting.

Selection Method	Technique
Drag	To create a highlighted selection, point at one end of the text to be selected. Press and hold the mouse button while dragging the pointer to the other end of the text, then release the mouse button.
Select a word	Double-click anywhere on the word you want to select
Select a bullet item	Press [Ctrl] and click anywhere inside the bulleted text. You may also triple-click anywhere on the word you want to select.
Deselect	Make another selection or click the mouse button in the text area.

How to Edit Text in a Slide Pane

You can edit text or move bulleted text in the Slide pane or the Outline tab. To edit text in the Slide pane:

1. Select the bulleted text you want to change.
2. If necessary, edit the text by:
 - Pressing the **[Delete]** key to delete the text; or
 - Typing new text to replace the selected text.
1. If necessary, move the bulleted item by:
 - Selecting the entire bulleted item; and
 - Dragging the item up or down to move it to its new location.

Move Bulleted Items in the Outline Tab

You can change the order of bulleted items and slides in the Outline tab:

1. Select the slide or bulleted item you want to move.
2. Click the **Move Up** or **Move Down** button on the Outlining toolbar until the slide or bulleted item appears where you want it.

Formatting Text Slides

Apply Character Formats

You can use character formatting to add interest to presentations, but do so sparingly. Keep in mind that adding too much character formatting can detract from your message or make it confusing.

Format Text

You can change the appearance of text by changing its font, size, style, and color. You can format text in the Outline tab or the Slide pane. To format text:

1. Select the text you want to format.
2. To change the font, select a new font from the Font drop-down list on the Formatting toolbar.
3. To change the size, select a new size from the Size drop-down list on the Formatting toolbar.
4. To change the style, click the **Bold**, **Italic**, or **Underline** button on the Formatting toolbar.
5. To change the color, select a new color from the Font Color button's drop-down palette. (The Font Color button is on the Drawing toolbar).

Repeat Formatting

When you format text in a slide, you can press the **[F4]** key to repeat that format for newly selected text. If you use the toolbar to apply more than one format, PowerPoint will repeat only the last format you applied.

Align Text

Alignment determines the position of the text within its text object box on a slide. Text can be left-aligned, right-aligned, centered, or justified, as follows:

1. Select the text you want to align.
2. Choose **Format > Alignment** to display the Alignment sub-menu.
3. From the sub-menu, select the alignment option you want:
 - **Align Left** - aligns text at the left edge of the text object box.
 - **Center** - aligns text between the left and right edges of the text object box.
 - **Align Right** - aligns text at the right edge of the text object box.
 - **Justify** - begins text at the left edge and ends the text at the right edge of the text object box.

You can also use the **Alignment** buttons on the Formatting toolbar to left-align, center, and right-align text.

Line Spacing

Line spacing is the vertical distance between two lines of text. By default, line spacing is set to single-line spacing, which means that the amount of space between lines of text depends on the size of the font used. For example, if the font size is 12, then single-line spacing will be 12 pts between lines of text. If you applied double-line spacing, then the lines would be separated by 24 pts of space.

Setting Line Spacing

1. Place the cursor in a paragraph, or select the paragraphs you want to affect.
2. Choose **Format > Line Spacing**.
3. In the Line Spacing dialog box, click on the arrows to increase or decrease line spacing options, or enter an exact setting.
4. Click **OK**.

Line Spacing Options

In the Line Spacing dialog box, there are three options for changing the amount of space between lines and bullet items on a slide.

- **Line Spacing** - the amount of space between selected lines of text. By default, line spacing is set to 1.
- **Before Paragraph** - increase or decrease the spacing before the first line of each selected paragraph.
- **After Paragraph** - the amount of space after the last line of each selected paragraph

Indents

In PowerPoint, indents are used to align bullets and text at a set distance from the margins. When the horizontal ruler in PowerPoint is displayed, you will find one set of the following indent markers on the left edge of the ruler for each level of bullets on the slide:

Indent Marker Types:

Marker Name	Marker Function
Bullet Indent	Controls the left boundary for the bullet.
Text Indent	Controls the left boundary of text for a bulleted item.
Left Indent	Controls the left boundary for both bullets and text.

How to Change Indents

1. Select the text object that you want to affect.
2. Choose **View > Ruler** to display the ruler.
3. To adjust the first-line indent, click and drag the upper marker for that indent to a desired position on the ruler.
4. To adjust the subsequent lines in a paragraph, click and drag the upper marker for that indent to a desired position on the ruler.
5. To maintain the relationship between the first line and the rest of the paragraph (to move both markers at once), click and drag the bottom half of the lower marker to a desired position on the ruler.

Preparing to Deliver a Presentation

After adding all of the content to a presentation, it is time to put the finishing touches on it. There are multiple ways to check for spelling errors, inconsistencies, or other problems. There are also several ways to enhance the presentation.

Spell Check a Presentation

AutoCorrect

Autocorrect corrects many common spelling errors automatically as you type. It is similar to the version used in Microsoft Word. Autocorrect fixes spelling errors as well as instances such as double capital letters at the beginning of a word, capitalizing the days of the week and the first words of a sentence. Common typing mistakes such as letter transposition are also automatically corrected as you type.

There may be times when you do not want Autocorrect turned on. To access options for Autocorrect, go under the **Tools** menu and choose **Autocorrect Options**. Each function in AutoCorrect can be selected or deselected by clicking in the check box associated with each function.

Spellchecking a PowerPoint Presentation

PowerPoint provides you with a powerful spellchecker that works in the same fashion as the one in Microsoft Word. As with that spellchecker, it's always a good idea to proofread your presentation yourself; however, the spell checker can sometimes be a lifesaver.

To check an entire presentation, don't select any text. If you run the spellchecker with specific text selected, it will only check that text. You don't have to click the insertion point at the beginning of a presentation to begin spellchecking, as the spellchecker will wrap around until it has checked the entire presentation.

There are four ways to access the spellchecker:

- In the **Tools** menu, choose **Spelling**.
- Click the **Spelling** button on the Toolbar.
- Press **[F7]**.
- Right-click on a flagged spelling error and choose **Spelling**.

Once the spellchecker is running, you can use the various options to help you find and correct spelling errors in your presentation. PowerPoint's spellchecker compares words with its internal dictionary. If PowerPoint does not recognize a word, there are several options you can have it perform, as described below:

- If the correction you want is already highlighted in the Suggestions list box, click **Change**.
- If the correction you want is in the Suggestions list box but not highlighted, select that word and click **Change**.
- If the correction you want is not suggested, you can type the correction in the top text box and click **Change**.
- You can click **Change All** to automatically correct any further occurrences of the particular spelling error.
- If the spellchecker comes across a word that has been repeated, you can click **Delete** to delete one of the instances of a word.

PowerPoint can check your spelling as you type. If it thinks you've misspelled a word, PowerPoint lets you know by drawing a wavy red line under the word. To correct one of these errors, right-click on the erroneous word and either choose one of the suggested changes or open the Spell Check dialog box and make the change there as described above.

View the Slide Show

While putting together a PowerPoint slide show, it is often useful to actually run the show to see what it will really look like when it is presented to an audience. This can provide a "reality check" and give a better idea of how the show is actually going to look.

Slide Show View

Use the **Slide Show** view to see the slide show on your computer screen one slide at a time, using the full screen, as you will when actually presenting the show. You can move the subsequent slides by either clicking your mouse button, clicking the **[Page Up]** and **[Page Down]** buttons, or by using the left and right arrow keys on your keyboard.

To view the Slide Show:

1. When you use the **Slide Show** view button, PowerPoint starts the show at the currently selected slide. So, go to the first slide in your presentation.
2. Click the **Slide Show** view button.
3. To move to the next slide, click the mouse button or push the right arrow key. At the end of the show, PowerPoint will display, "End of slide show, click to exit".
4. You can exit a slide show at any point by pressing the **[Esc]** key.
5. When you exit a slide show, PowerPoint returns to **Normal** view.

Arrange Slides in a Presentation

The ability to reorder slides in a presentation after you've created them enables you to easily reorder slides after you've created them, as well as giving you the freedom to organize a new presentation out of an older one. This can be essential in using the same material for different audiences without having to recreate an entire slide show presentation. PowerPoint also lets you hide selected slides in a presentation, in case you want to reuse a slide show for an audience and omit certain parts of the presentation that don't apply to that particular presentation.

Slide Sorter View

Choose **View/Slide Sorter**, or click on the **Slide Sorter** view button. PowerPoint changes to the **Slide Sorter** view and opens the slide sorter toolbar.

In **Slide Sorter** view, you see the thumbnail representations of the slides comprising your slide show. This is a great way to see the whole presentation at once, in the order in which they will appear in the slide show. After you are finished creating and editing your presentation, you can come to **Slide Sorter** view to shuffle slides around, and copy, delete, or hide slides, until you've got it right. **Slide Sorter** view also allows you to set up special effects to the slides in the presentation.

As you look through your slides in **Slide Sorter** view, and find a slide that you need to further edit, just double-click on that slide and it will be displayed in **Normal** view.

Rearranging Slides in Slide Sorter View

You can often make a presentation better by playing with the order in which the slides appear. Sometimes, you may wish to entirely hide a slide that doesn't apply to your audience. All of this happens in **Slide Sorter** view. To rearrange slides in **Slide Sorter** view:

1. Click on the **Slide Sorter** view button (or choose **View/Slide Sorter**).
2. Click on the slide you wish to move, copy, delete, or hide to select it.
3. Now move, copy, delete, or hide the slide:
 - To move a slide, press and hold the mouse button, drag the slide to where you want it to go, and release the mouse button.
 - To copy a slide, press and hold the **[Ctrl]** key and drag the slide to where you want it to go.
 - To delete a slide, press **[Delete]** or **[Backspace]**.
 - To hide a slide, right-click in the slide thumbnail and choose **Hide Slide**.

Adding Transitions to a Slide Show

One way to add a nice touch of professionalism to a slide show is to add transitions to the slides. Transitions affect the way one slide goes to the next slide. Transitions add interest to your slide show, but care should be taken to be sure they do not become a distraction from the show itself. It is often best to choose one transition you like and use it for the entire slide show.

Slide Selection in Sorter View

In **Slide Sorter** view, you can select one slide, two or more slides that are next to each other, or two or more slides that are not next to each other.

To Select	Do This
One single slide	Click on the slide.
Two or more contiguous slides	Click on the first slide, press and hold [Shift] , and then click on the last slide.
Two or more non-contiguous slides	Click on the first slide, press and hold [Ctrl] , and then click on all the other slides.

How to Set Transition Effects

For each slide in a presentation, you can set a different transition effect and determine how fast the transition will happen. To set transition effects:

1. Switch to **Slide Sorter** view.
2. Select the slides to which you want to assign a transition.
3. Choose **Slide Show/Slide Transition** or click the **Transition** button on the **Slide Sorter** toolbar to open the **Slide Transition** task pane.
4. From the **Apply to Selected Slides** list box, select the transition effect you want to apply. PowerPoint previews the effect on the selected slides and displays a **Preview Animation** button beneath each selected slide.
5. In the **Modify Transition** section, select a speed (Slow, Medium, or Fast) for the transition effect. Once again, PowerPoint previews the effect on the selected slides.
6. To preview the effect again, click the **Animation Preview** button beneath the slide on the left side.
7. Close the **Slide Transition** pane.

Animating Text

Normally, when you have a slide with multiple bullets, PowerPoint will display all the text bullets at once when you go to that slide during a slide show. One nice effect, however, is having the different bullets appear as you speak about them, one at a time. This can be accomplished by using PowerPoint's animate text feature.

Animation of text in PowerPoint refers to the manner in which individual text or other objects appear as they enter or exit a slide. Normally, all objects on a slide appear at the same time when you display the slide. However, you can have different objects appear and exit at different times under your control as the show proceeds. To add animation to text in a presentation:

1. In **Normal** view, select a line of bulleted text.
2. Choose **Slide Show/Custom Animation** to open the **Custom Animation** task pane.
3. Click the **Add Effect** button to display the drop-down list.
4. From the **Entrance** sub-menu, choose the animation effect of your choice. You can choose **More Effects** if the effect you want isn't listed. PowerPoint displays the animation effect in the list box on the **Custom Animation** task pane.
5. In the **Modify** section, set the direction and speed.
6. Close the **Custom Animation** task pane.

Printing Slides, Speaker Notes, and Handouts

PowerPoint enables you to easily print handouts, slides, and your own speaker notes that you can reference while giving a presentation.

Handouts

You can use PowerPoint to create handouts of the slides in your presentation. You can decide how many slides you wish to appear on a page. Usually, it is best to have no more than 4 in order that they remain readable. You can choose layouts from the **Print** dialog box right before you print. PowerPoint automatically formats everything for you.

Print Options

There are many options for printing your presentation. You can print slides, notes pages, handout pages, or outlines. You can print the current slide, or select a range of slides to print. You can also select other print options. To print various things from PowerPoint:

1. Choose **File > Print** to display the **Print** dialog box.
2. Under the **Print What** heading, select the type of printout.
3. Select any other options you want.
4. Click **OK**.

Creating a Custom Design Template

While PowerPoint offers a nice variety of design templates, it is also useful at times to create your own. A design template, once created, can be used over and over again. For instance, if your department wanted all presentations to include your company's logo in one corner, with its colors as the background, you could create a design template with these features and reuse it again and again.

Master Slides

A master slide is one that is a part of every presentation that controls certain text characteristics such as font type, size, and color, as well as background color and style. Masters can affect all the slides in a presentation. There are masters that control the title slide, notes pages, and handout pages. When you apply a template to a presentation, you apply a new set of masters that control the presentation's look and format. There are four types of masters used in PowerPoint, as described below.

Type of Master	Description
Slide Master	The Slide Master is an element of the design template that stores information about the template, such as font styles, placeholder sizes and locations, background design, and color schemes.
Title Master	The Title Master is used to make changes to slides in your presentation that use a Title Slide layout. This enables you to give a title slide a different look from the rest of your presentation.
Notes Master	The Notes Master is used to set the formatting for your notes pages. You can set headers, footers, and the Notes Body area.
Handout Master	The Handout Master is used to set the formatting of your handouts pages. You can set headers, footers, and the size and positioning of the number of handouts per page.

Slide Background

A slide background is a design element that appears behind the contents of the slide. The slide background is made up gradient, texture, patterns, or a picture. To change the slide background:

1. Select the slide you want to change:
 1. Select a slide in **Normal** view.
 2. Select the **Slide Master**.
2. Choose **Format/Background**.
3. In the **Background Fill** section, click on the drop-down arrow and choose **Fill Effects**.
4. On the **Fill Effects** dialog box, select the tab that contains all the options you want to set and click **OK**.
5. Click **Apply to All**.

The following table describes the options you can set in the **Fill Effects** dialog box.

Tab	Description
Gradient	Enables you to set the color, transparency, shading style, and variants.
Texture	Enables you to select a texture for the background.
Pattern	Enables you to set a pattern, as well as the foreground and background color for the pattern.
Picture	Enables you to select a picture as a fill for the background.

Inserting Graphics

One element you can add to every slide is a graphic of some sort. To add a graphic to one or all slides:

1. Display an individual slide or the **Slide Master** for all slides.
2. Choose **Insert > Picture > From File**.
3. Navigate to the folder that contains the picture that you wish to insert.
4. Select the picture file.
5. Click **Insert**.

PowerPoint alllows you to insert most popular graphic formats into your presentation.

Adding Footers

Footers serve many uses in PowerPoint presentations. You can use them to provide information like slide numbers, footer text, and date. All of the information goes at the bottom of each slide in your design template.

Components of a Footer

A footer in PowerPoint is text that you create once, but it appears on the bottom of each slide. It can consist of text, slide numbers, and a date. To add a footer:

1. Display the **Slide Master**.
2. Choose **View > Header and Footer**.
3. In the **Date and Time** section, select the options that you want.
4. Check the **Slide Number** box to add a number to each slide.
5. Under the checked **Footer** check box, click in the text box and enter the footer text.
6. Click **Apply To All**.

Formatting a Footer

You can change the way a footer looks at any time. On the **Slide Master**, select the placeholder that contains the information you want to change and format the text as you would any normal text. You can also drag the placeholder around if you wish to change its location.

Modify the Slide Master Font

PowerPoint allows you to change the way that the text in each individual part of your presentation looks. If you have a very long presentation, for example, but decide that you no longer like the font for each title, PowerPoint makes it easy to change the font for each title at once. To change the appearance of the Slide Master text:

1. View the **Slide Master**.
2. Select the text you want to change.
3. Change the font to a different font.
4. Change the font size.
5. Apply a text effect, such as bold.
6. Return to **Normal** view.

Some Tips for Effective Slide Shows

Here are a few tips that will help your PowerPoint slide shows look professional and promote effective visual clues to help you get your points across:

1. Limit animation.
2. Stay with one slide transition.
3. Use sans-serif fonts.
4. No tiny font sizes; remember the folks in the back row.
5. Keep your slides simple and uncluttered
6. If you are presenting in a light room, use a light slide background.
7. If you are presenting in a dark room, use a dark slide background.
8. Make sure to use high-contrast text and slide backgrounds.

Glossary

- **Ask A Question Box** - Provides quick access to help.
 - **AutoContent Wizard** - A wizard that produces a presentation with a general structure and suggested topics based on options you choose regarding the presentation output.
 - **AutoCorrect** - Corrects capitalization, grammar, and spelling errors automatically as you type.
 - **AutoShapes** - Ready-made shapes you can draw on the slides in your presentation by choosing a shape from the AutoShapes drop-down menu.
 - **Clip Art** - Professionally designed images that you can add to documents. You can change the size, appearance, and location of clip art after it has been inserted into a document.
 - **Design Template** - The background, fonts, bullets, formatting, and color scheme that you can apply to define the look of your presentation.
 - **Expanded Menu** - A menu that displays both common and less-common commands after you pause the mouse pointer over it.
 - **Floating Toolbars** - Toolbars that are not attached to the edge of the program window.
 - **Indents** - Used to align bullets and text on a slide.
 - **Line Spacing** - The vertical distance between lines of text.
 - **Normal View** - The view you use to create and edit your presentation. It consists of three working areas: the Outline and Slides tabs, the Slide pane, and the Notes pane.
-

- **Notes Pane** - In Normal view, the Notes Pane is used to create notes for each slide in your presentation.
- **Outline and Slides Tabs** - One of the panes in Normal view, you use the Outline and Slides tabs to toggle between an outline of the text in your presentation and a thumbnail view of each slide.
- **Presentation** - An interaction between a speaker and an audience. A presentation usually includes one or more visual aids: in the case of PowerPoint, these are slides.
- **Sizing Handles** - Small circles or squares that appear along the border of a selected slide or object.
- **Slide Pane** - In Normal view, the area in the center of the application window where you create and format your slide content. It displays the current slide.
- **Slide Sorter View** - All slides in the presentation are displayed at once on the screen. In this view, you can rearrange, copy, and delete slides.
- **Task Pane** - Provides quick access to commands related to your current task.
- **Transition Effects** - In a slide show, a transition determines how the display changes as you move from one slide to the next.
- **WordArt** - A tool you can use to create unique text effects. Text objects you create with read-made effects to which you can apply additional formatting options.

For More Information...

We recommend:

- The **Help** menu built into PowerPoint.
 - Press the **[F1]** button in Windows.
 - From the **Help** menu, select from options to view the PowerPoint help contents, search PowerPoint help, or connect to other help sources.
- Free Microsoft Help and Support available online at [1].
 - Topic specific FAQs.
 - Downloads & Updates.
 - Links to additional resources.
- Also available from Microsoft, the new Office Online website offers tips and assistance on office products including PowerPoint. Explore this at [2].

References

[1] <http://support.microsoft.com/ph/2648>

[2] <http://office.microsoft.com/>

Article Sources and Contributors

Microsoft Office PowerPoint *Source:* <http://en.wikibooks.org/w/index.php?oldid=1614497> *Contributors:* Adrignola, BCTraining, Darklama, Hagindaz, Jguk, Mark Bosley, Mike.lifeguard, Nick.anderegg, QuiteUnusual, Robert Horning, Uncle G, Whiteknight, 22 anonymous edits

Image Sources, Licenses and Contributors

Image:PowerPoint_Window.png *Source:* http://en.wikibooks.org/w/index.php?title=File:PowerPoint_Window.png *License:* unknown *Contributors:* User:BCTraining

License

Creative Commons Attribution-Share Alike 3.0 Unported
<http://creativecommons.org/licenses/by-sa/3.0/>
