

MEDICATION ADMINISTRATION VIA GASTROSTOMY IN CHILDREN – THE NURSES’ PRACTICE

BACKGROUND

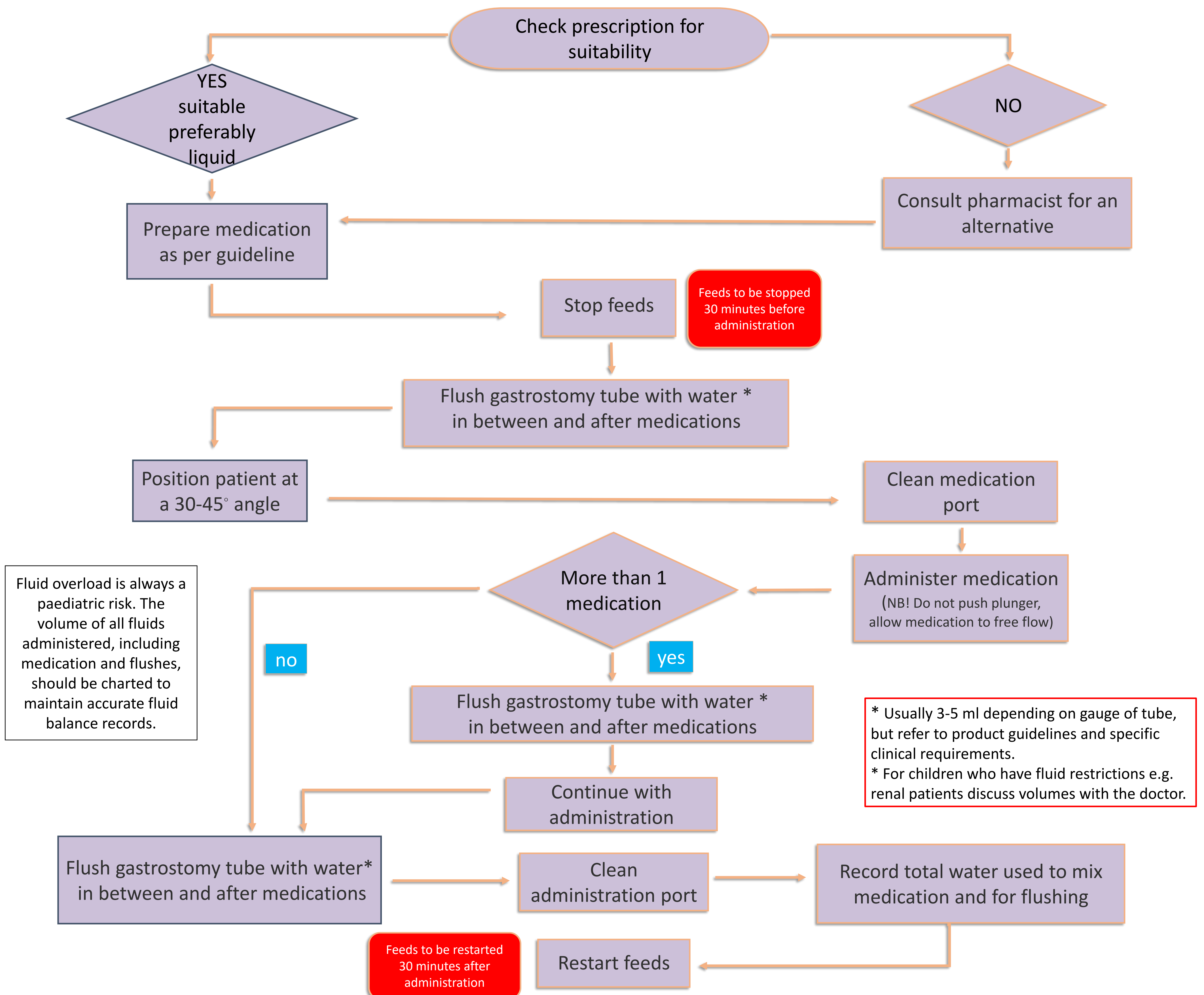
- A gastrostomy is a surgical procedure to aid a child who is unable to meet their nutritional requirements via the oral route. It allows feeds and other required fluids including medications to be administered enterally, bypassing the normal oral route.
- In South Africa, the most common indications for gastrostomy are: dysphagia, aspiration and the need for nutritional support.¹
- Administering a drug via a gastrostomy usually falls outside the terms of the drug's product license, potentially resulting in the prescriber, dispenser and administrator becoming liable for any harm that occurs from taking the medication.²

PURPOSE

- To develop an evidence-based practice guideline that will aid nurses in preventing errors and offer guidance for the correct practice of administering medication via gastrostomy.
- This guideline was developed through a topic-specific scope review to identify evidence relating to each aspect of care and the identification, appraisal and contextual adaptation of existing guidelines produced by international advanced nurse practitioners and professional societies.

FLOW CHART FOR ADMINISTRATION OF MEDICATION VIA GASTROSTOMY

This flow chart is to be used in conjunction with the full evidence-based practice guideline (available from the author) and appropriate staff education and training.



References:

- Norman, V., Singh, S. A., Hittler, T., Jones, N., Kenny, N., Mann, R., ... & Moeng, A. (2011). Indications, medical conditions and services related to gastrostomy placement in infants and children at a tertiary hospital in South Africa. *South African Journal of Child Health*, 5(3), 86-89.
- Ranieri, M., White, R., & Bradnam, V. (2015). Handbook of Drug Administration Via Enteral Feeding Tubes. *American Journal of Health-System Pharmacy*, 72(14), 1239-1240.

Author:

Jabu Kgasapane
RN, RM, RPaedsN, MNCN (UCT 2019)
Email: mrkgasapane@ymail.com